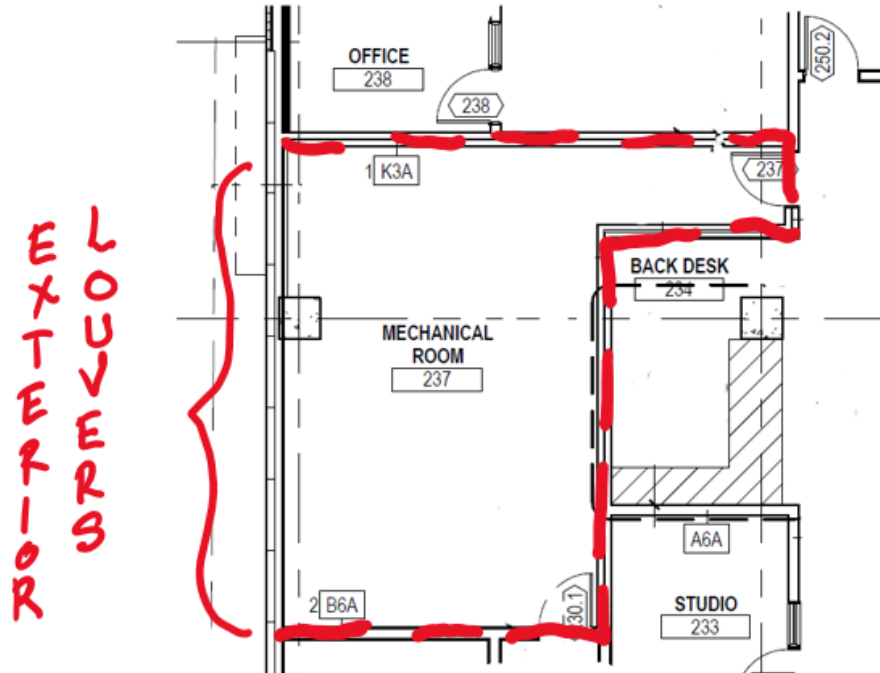


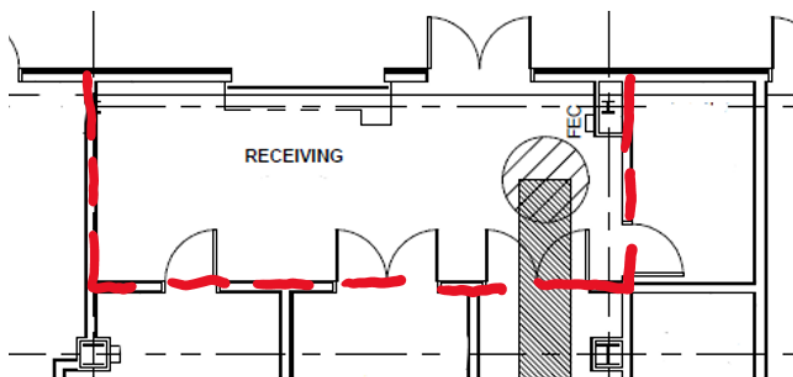


**Air barriers typically are on the exterior building envelope elements. Sometimes, the exterior goes into the building, requiring that the air barrier go into the building to complete the building envelope.**

**Review your building for non-ducted louvers, doors that will be typically open during the use of the space, interior spaces that are not fully tempered (a building HVAC system).**



**Careful detailing to connect the exterior air barrier with the interior air barrier is needed...**



**Sometimes, AVB is needed on the interior of the building to seal the building envelope**

**Common location of interior spaces that typically need air barrier:**  
Loading/Receiving Docks  Open Louvered Spaces  Non-Tempered Space

